



Sample Report for QM Review 1/1/2016 to 12/31/2016 Health Plan Management Report



Executive Summary

- Total Savings*: \$439,132
- Health Plan Savings: \$439,132
- Return on Investment (ROI)*: 2.7:1
- All Open Cases as of 12/31/2016: 46
- All Cases Managed During Period: 65
- Open Cancer Cases as of 12/31/2016: 18
- Cancer Cases Managed During Period: 23
- Encounters Reviewed*: 387

CCM Team Members



CCM Management Team

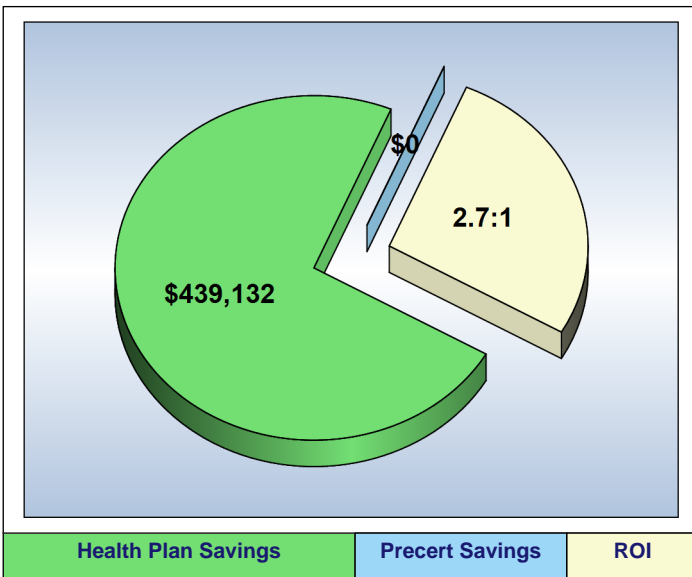


Jessica Wheeler
Intake Coordinator



Lisa Tierno
Nurse Consultant

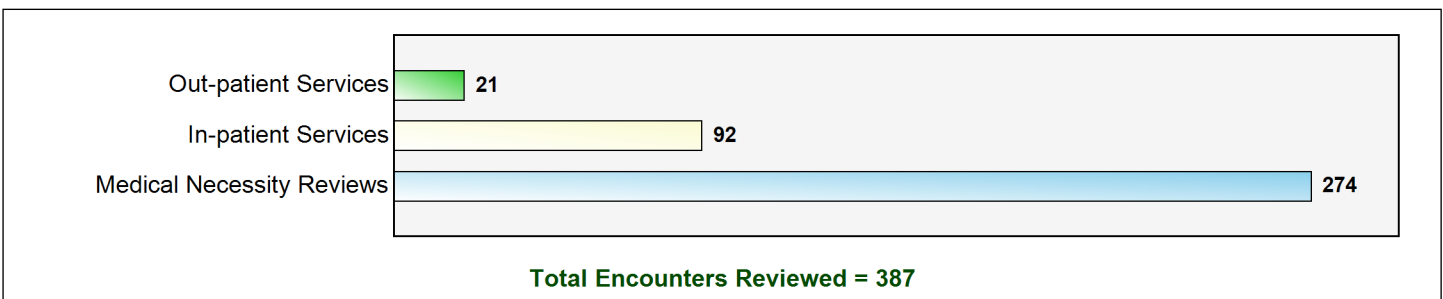
Savings and Return on Investment (ROI)



Health Plan Savings

Service Type	Savings
Comprehensive Wellness	\$366,107.04
Case/Care Management Services	\$65,126.50
Durable Medical Equipment	\$52,407.63
Home Care Services	\$9,295.14
Chiropractic Services	\$3,816.83
Out-patient Medical Therapy	\$3,161.76
Prescription Review	\$565.00
Out-patient Surgery	\$348.19
Out-patient Medical Services	(\$219.00)
All Others	(\$61,477.11)
Total	\$439,131.98

Encounters Reviewed



Footnotes *

Total Savings - Plan costs avoided because of Corporate Care Management's intervention

Return on Investment - Calculated based on CCM savings in ratio to Plan Cost for CCM professional services

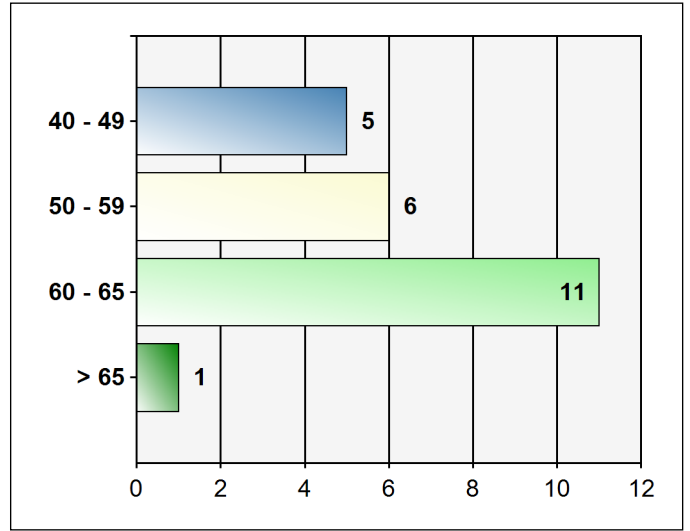
Medical Necessity Reviews - Conducted on services provided outside of the hospital such as PT, home care and durable medical equipment

Case Management & Care Coordination Detail

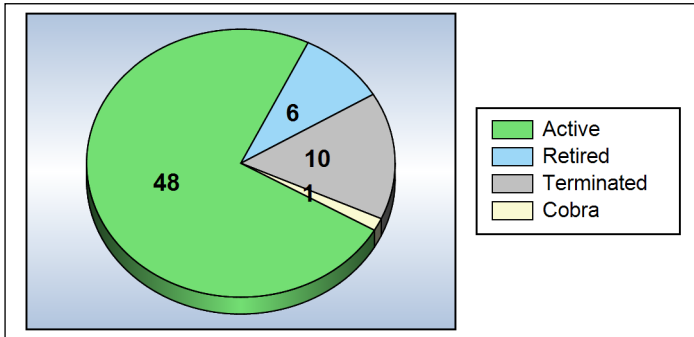
Cases by Diagnosis

Category	Open	Closed
Cancer	18	5
Lifetime Illness	8	2
Multiple Conditions	7	3
Single High Cost	5	3
Bariatric Surgery	4	1
ESRD	2	1
High Risk Birth	0	2
Diabetes	0	1
All Others	2	1
Totals as of 12/31/2016	46	19

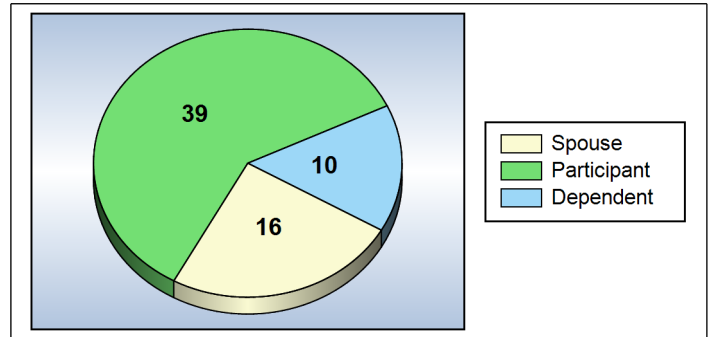
Cancer - Frequency by Member Age



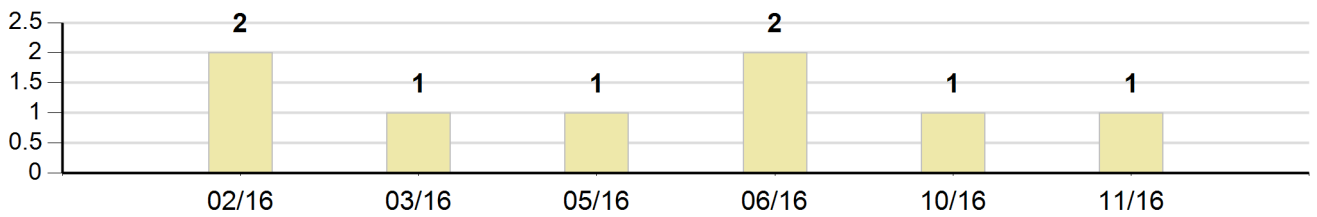
Cases by Employee Status



Cases by Member Relationship



Cases Open During Time Frame



Cases Closed During Time Frame

